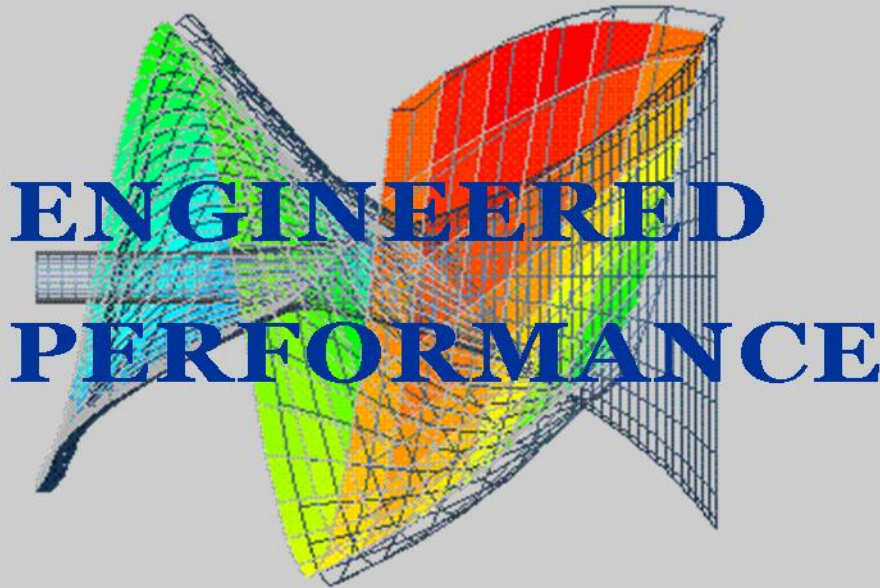


# intMPE



International Mineral Processing Equipment



**Industrial Series**

**API-610 & ANSI B73.1M**



*intMPE*

International Mineral Processing Equipment  
A Division of Canamera Enterprises Inc.

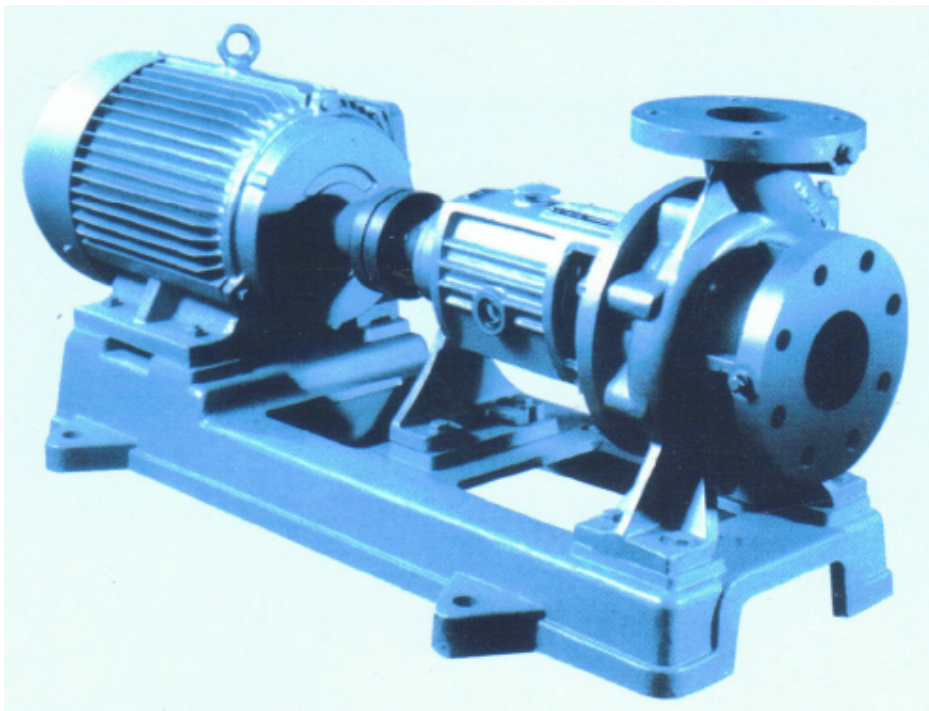


## **MPHHISP, MPHHISRP, MPHHISYP Series Pumps**

### **General:**

This series of **intMPE** pumps is for 40 Models all covered by ISO2858. By changing impeller diameters and by speed changes, we can have 267 different pump performances to satisfy your most demanding need.

**intMPE** pumps strictly meet the ISO2858 specification, so our pumps have good performance and reasonable curves. IntMPE MPHHISP series pumps all perform under a working pressure of 1.6 MPa. All pump casings are static pressure tested to 2.4 MPa.



The **intMPE** pumps are a single stage, single suction and cantilever style centrifugal pump, for delivering water and liquid whose physical & chemical appearances are familiar with water excluding solid particle. MPHHISP pumps are suitable for liquids under 80 degree Celsius. MPHHISRP pumps are suitable for liquids up to 130 degree Celsius. MPHHISYP pumps are for thin oil, such as petrol and diesel oil.

### **Model Meaning:**

Example: MPHHIS(R) 125-80-160A(J)-IS<sub>1</sub>

IS 125-80-160Z

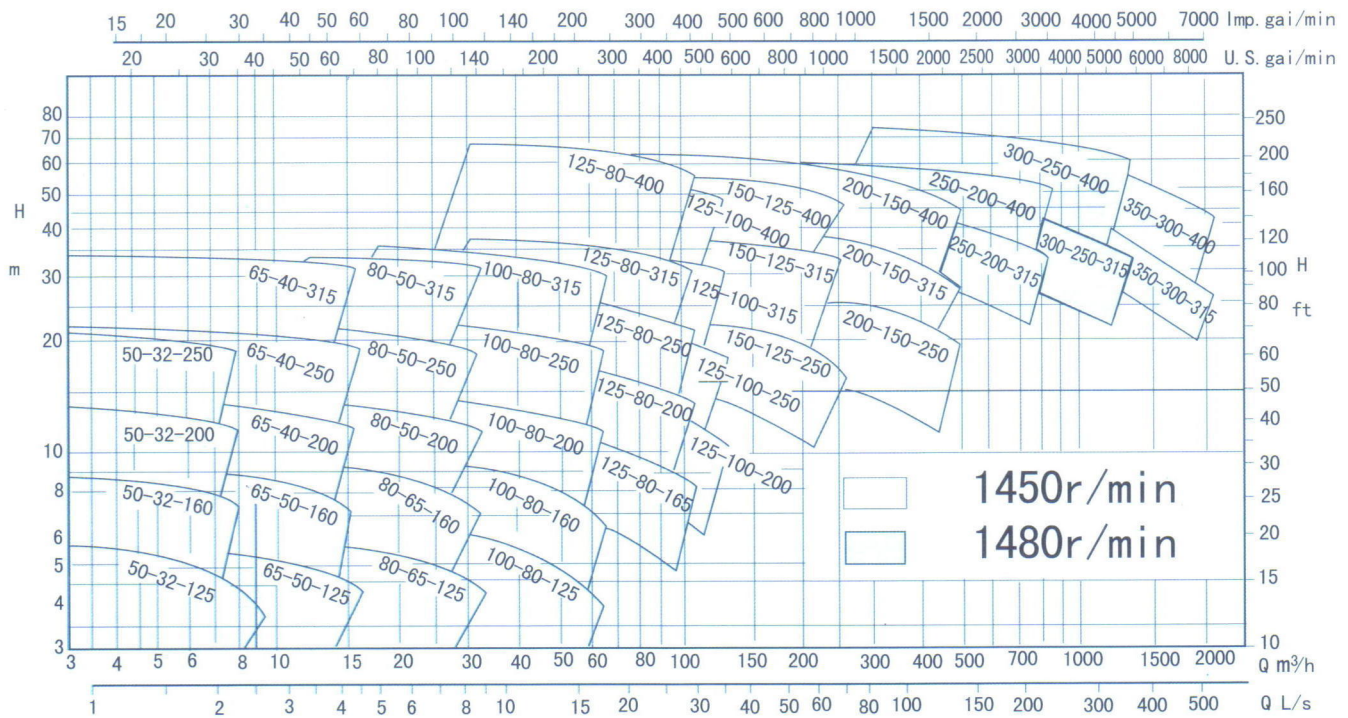
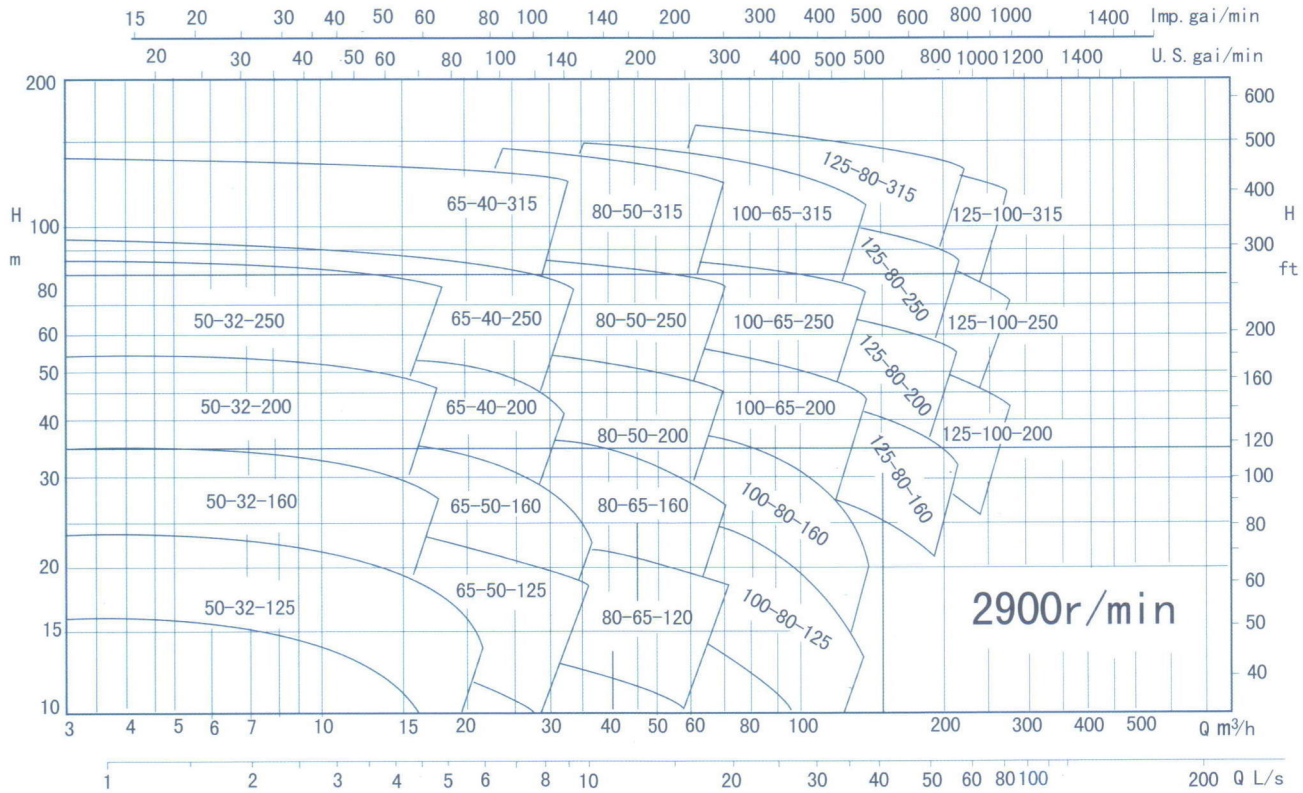
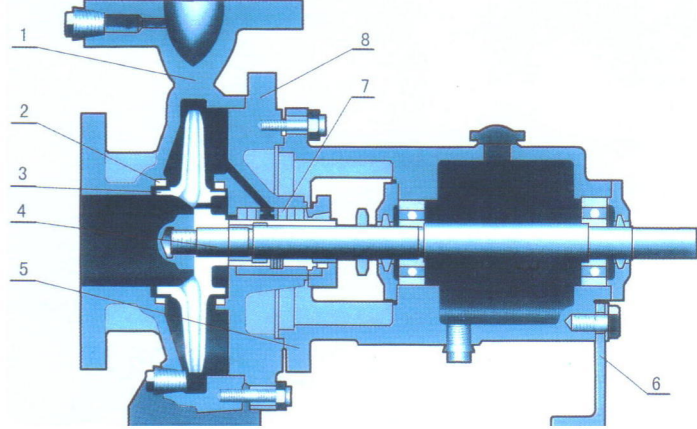
MP = Mineral Processing

HH = Heavy Horizontal Pump

IS = Standard single stage centrifugal pump



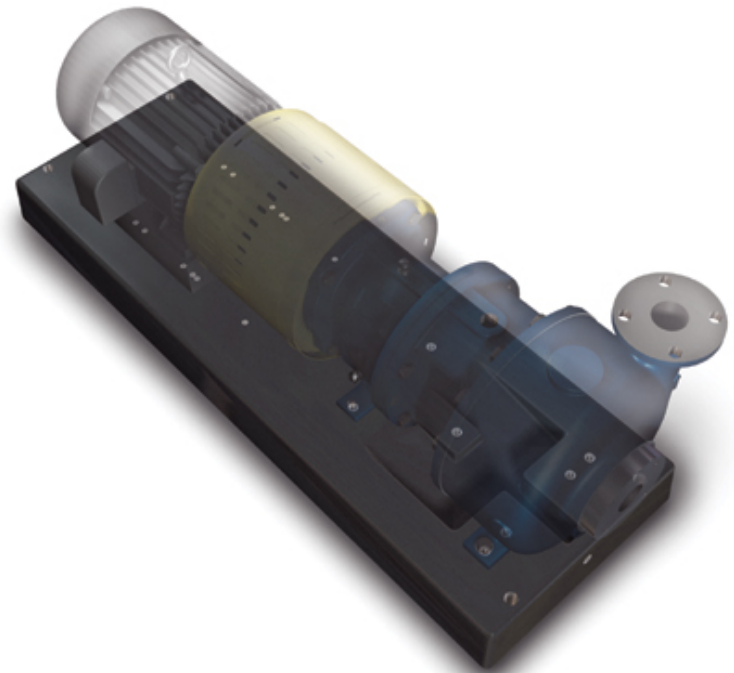
# INTMPE HEAVY INDUSTRIAL TYPE MPHHDISP PUMPS



# Polymer Concrete Baseplates

## Features

- ◆ ANSI B73.1 M dimensions
- ◆ Excellent corrosion resistance
- ◆ Vibration dampening superior to steel and iron
- ◆ Integrally molded catch basin
- ◆ 316 stainless steel inserts



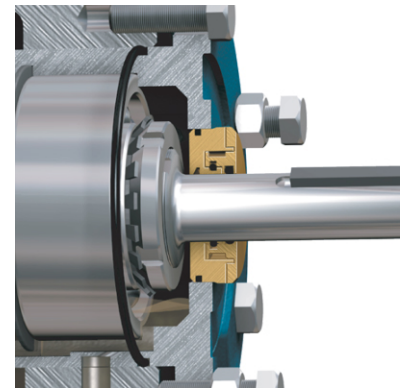
# Inpro/seal<sup>®</sup> Labys

## Features

- ◆ High quality bronze
- ◆ Life is at least 100,000 pumping hours (11.4 years)
- ◆ The Inpro/Seal "VBX" Bearing Isolator is the only labyrinth seal to afford positive protection against vapor transfer into the lube system -- at rest or under load.



Section View:



# Guards

## Features

- ◆ Economically priced
- ◆ Safety yellow
- ◆ Barrel type coupling guards will bolt directly.

