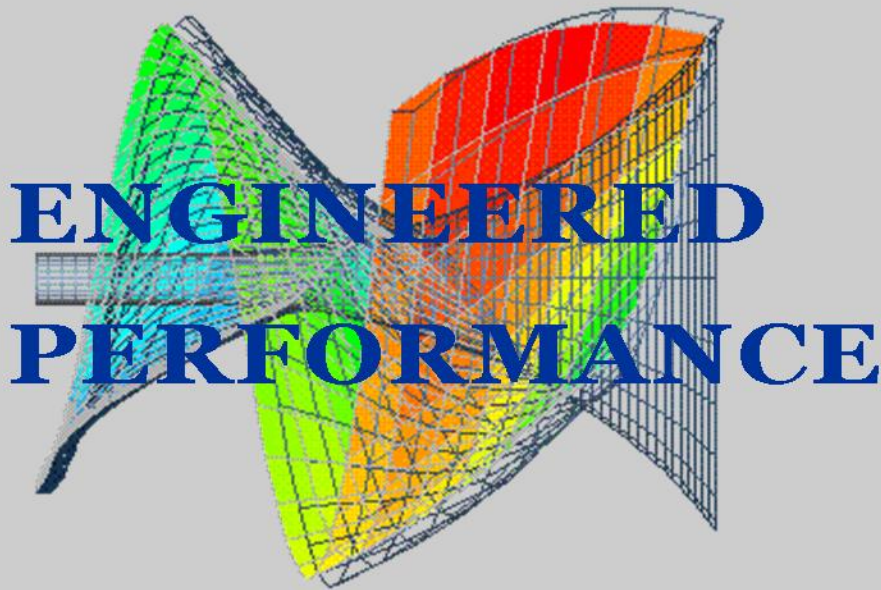


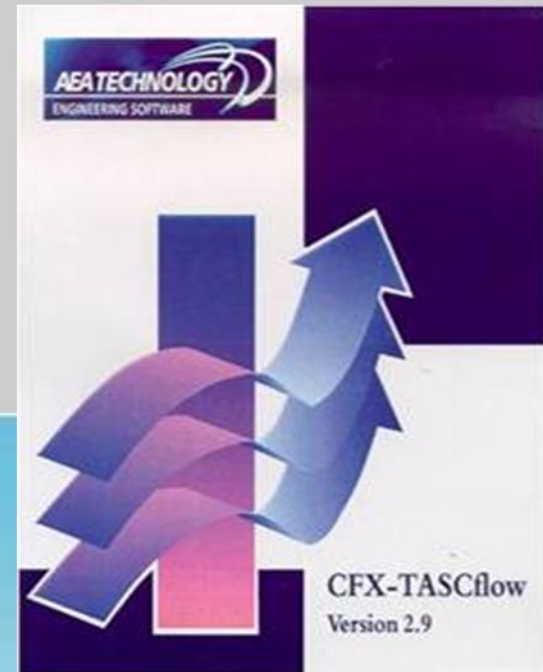
intMPE inc.

International Mineral Processing Equipment



Industrial Series

API-610 & ANSI B73.1M



COMPLETE PUMP SYSTEMS

- ◆ MPHHDISP Pumps
- ◆ Baseplates, Guards
- ◆ Labyrinth & Mechanical Seals
- ◆ Lantern ring material

ISO-9001 Certified

ASTM materials

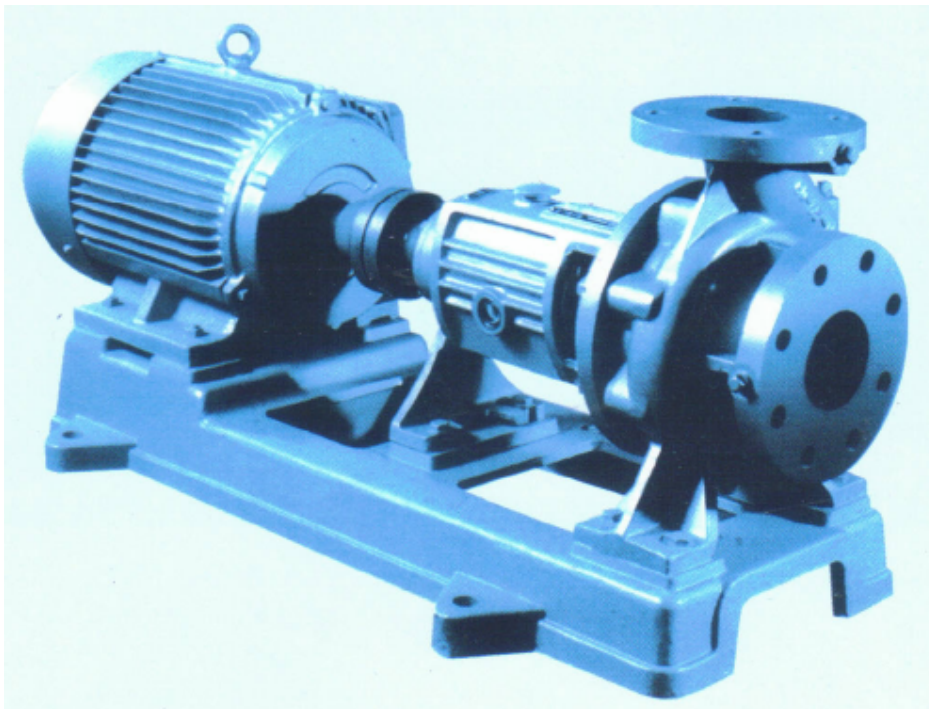


MPHHISP, MPHHISRP, MPHHISYP Series Pumps

General:

This series of **intMPE** pumps is for 40 Models all covered by ISO2858. By changing impeller diameters and by speed changes, we can have 267 different pump performances to satisfy your most demanding need.

intMPE pumps strictly meet the ISO2858 specification, so our pumps have good performance and reasonable curves. IntMPE MPHHISP series pumps all perform under a working pressure of 1.6 MPa. All pump casings are static pressure tested to 2.4 MPa.



The **intMPE** pumps are a single stage, single suction and cantilever style centrifugal pump, for delivering water and liquid whose physical & chemical appearances are familiar with water excluding solid particle. MPHHISP pumps are suitable for liquids under 80 degree Celsius. MPHHISRP pumps are suitable for liquids up to 130 degree Celsius. MPHHISYP pumps are for thin oil, such as petrol and diesel oil.

Model Meaning:

Example: MPHHIS(R) 125-80-160A(J)-IS₁

IS 125-80-160Z

MP = Mineral Processing

HH = Heavy Horizontal Pump

IS = Standard single stage centrifugal pump

ISR = Single stage centrifugal hot-water pump

ISY = Single stage centrifugal oil pump

125 = Inlet diameter (mm)

80 = Outlet diameter (mm)

160 = Nominal diameter of impeller

O = Original type impeller

A = Sign for the first time cutting impeller

B = Sign for the second time cutting impeller

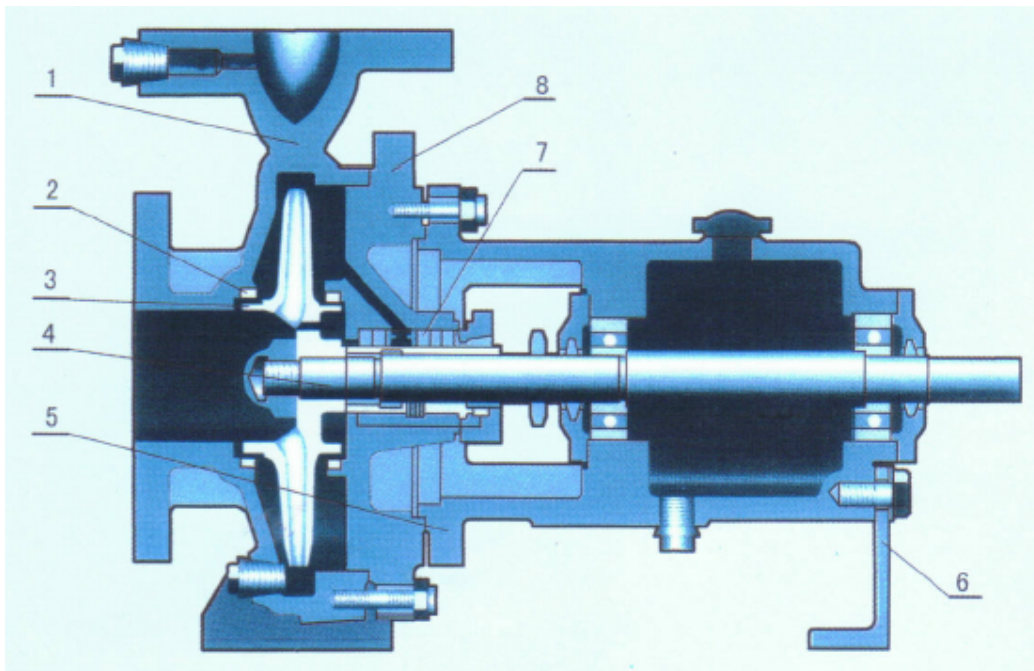
C = Sign for the third time cutting impeller

Z = Increase diameter of impeller

(J) = Pump's design speed is 2900 r/min fall to 1450r/min

S₁ = Internal mechanical seal

Structure:



1. Pump Body

2. Packing Washer

3. Impeller

4. Shaft

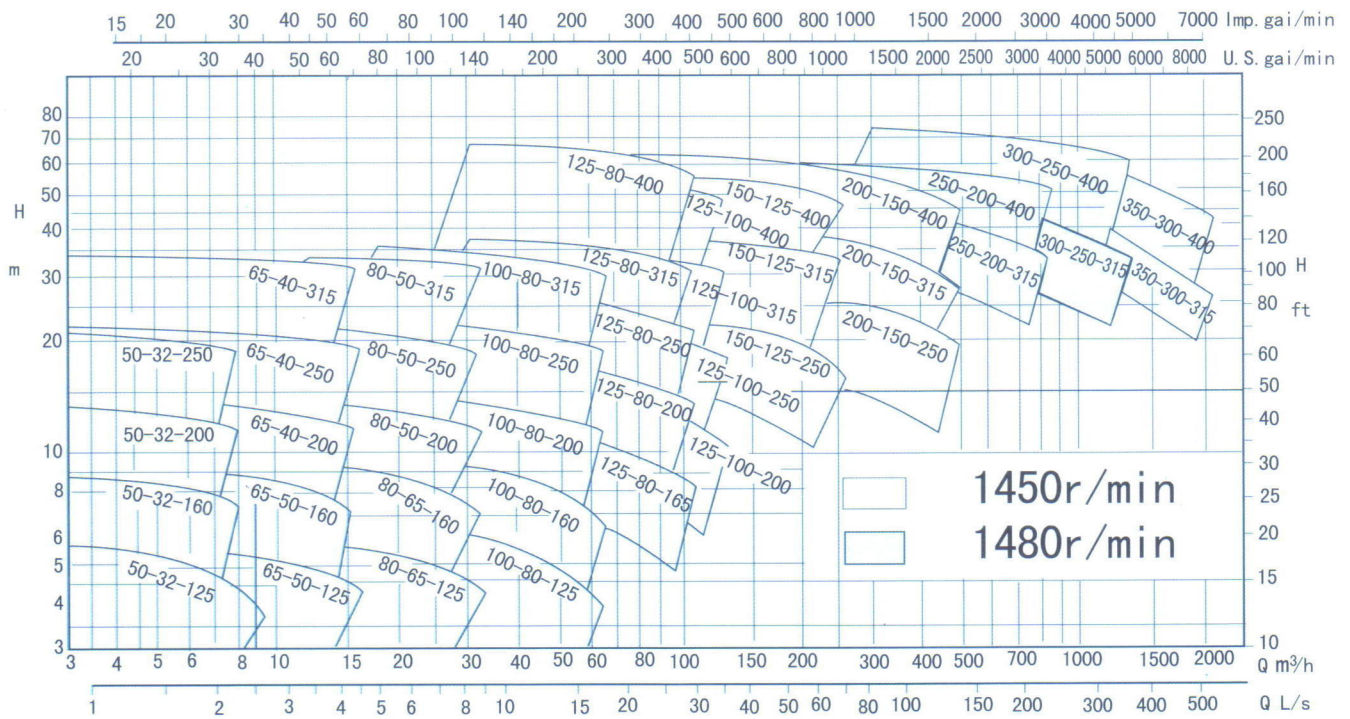
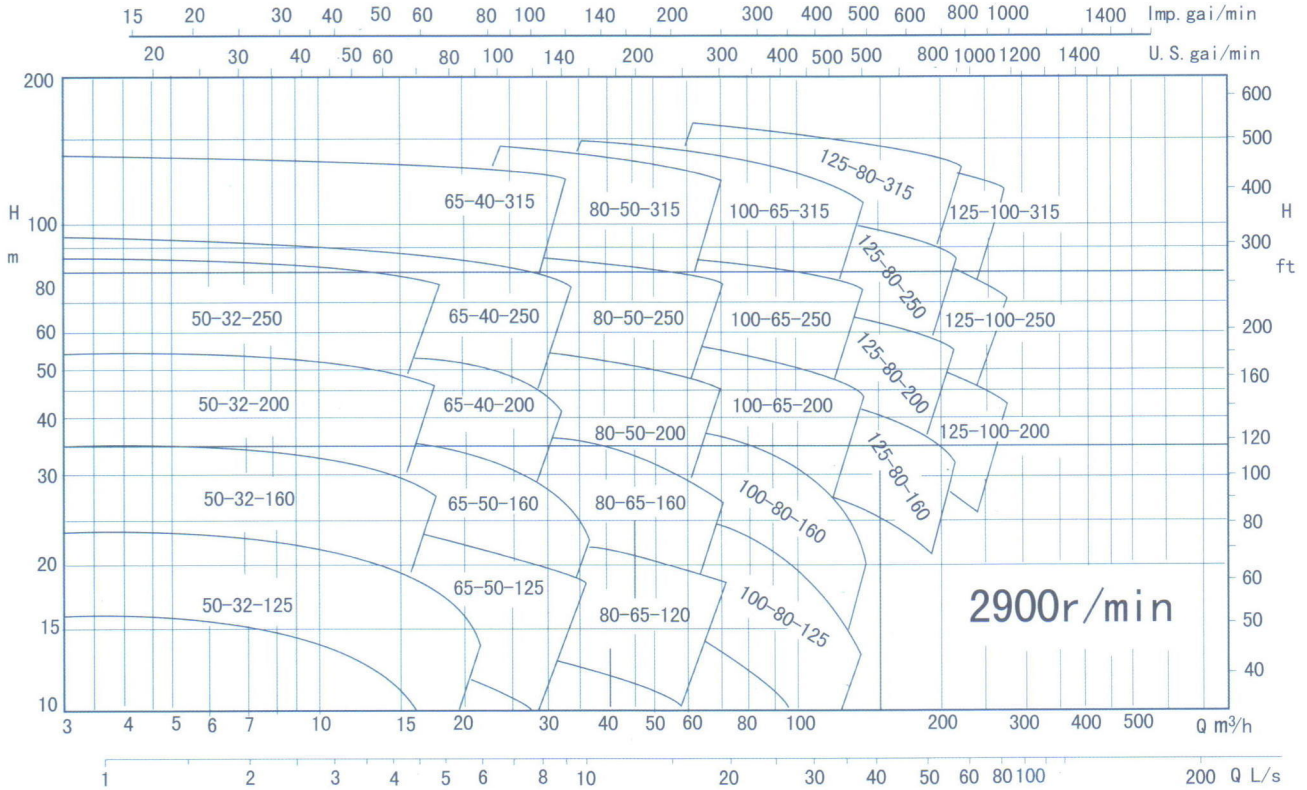
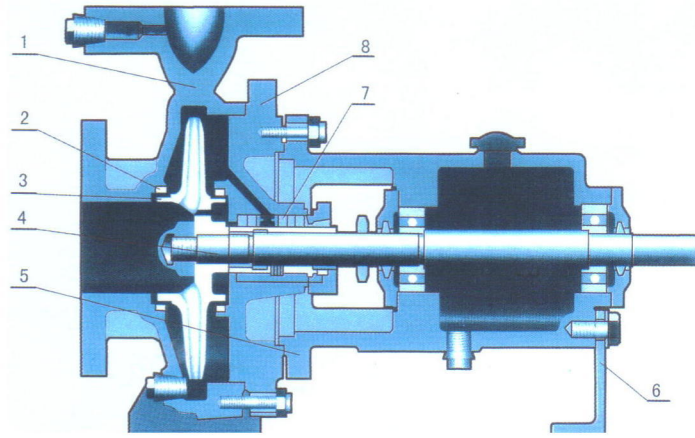
5. Hanger Bracket

6. Bracket

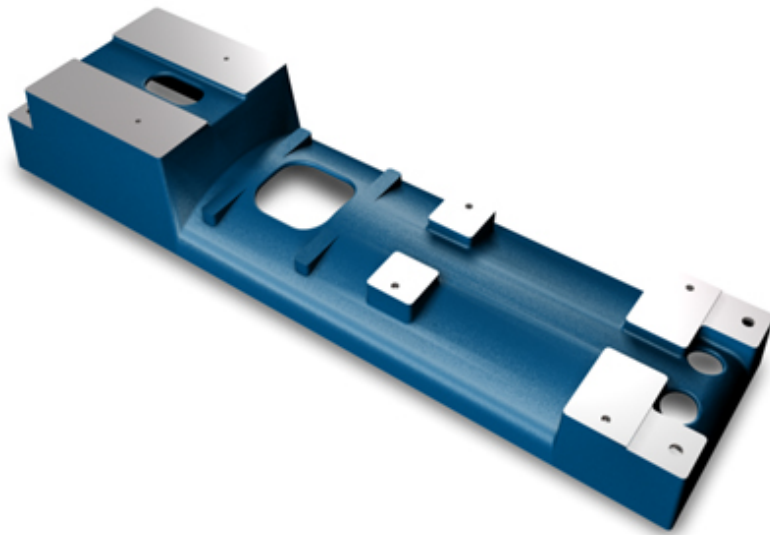
7. Packing Box

8. Pump Casing

INTMPE HEAVY INDUSTRIAL TYPE MPHHDISP PUMPS



Cast Iron Baseplates



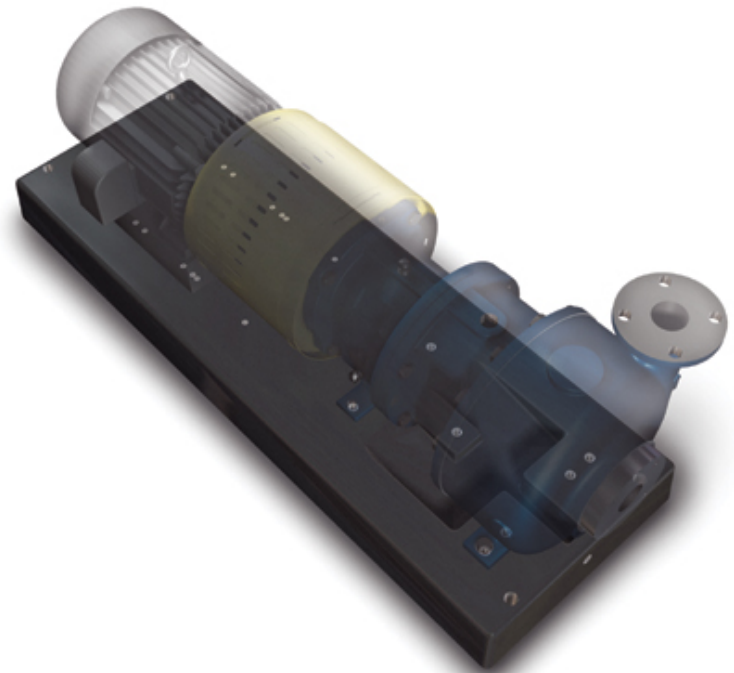
Top view:



Polymer Concrete Baseplates

Features

- ◆ ANSI B73.1 M dimensions
- ◆ Excellent corrosion resistance
- ◆ Vibration dampening superior to steel and iron
- ◆ Integrally molded catch basin
- ◆ 316 stainless steel inserts



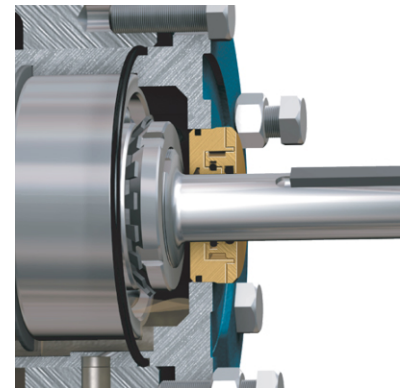
Inpro/seal[®] Labys

Features

- ◆ High quality bronze
- ◆ Life is at least 100,000 pumping hours (11.4 years)
- ◆ The Inpro/Seal "VBX" Bearing Isolator is the only labyrinth seal to afford positive protection against vapor transfer into the lube system -- at rest or under load.



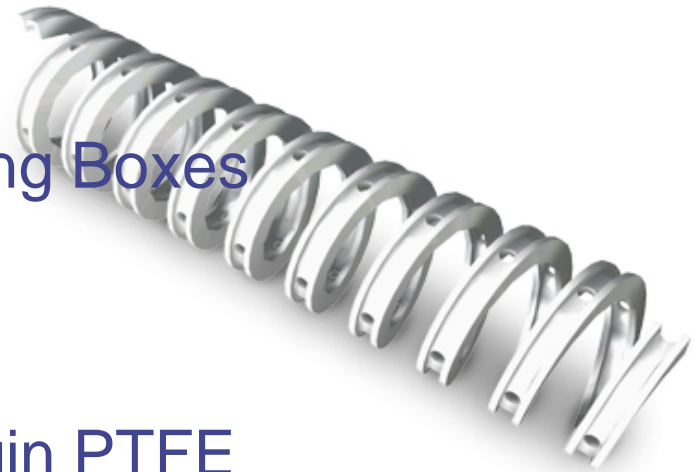
Section View:



Lantern Ring Material

Features

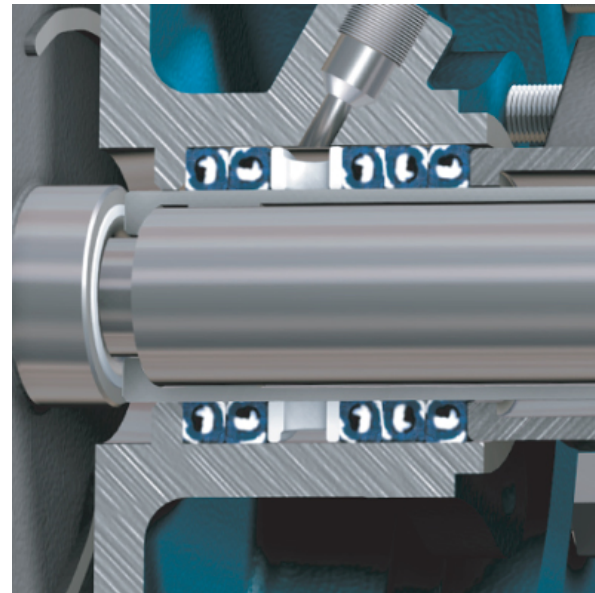
- ◆ Thermal Formed
 - ü Fits your stuffing box better
 - ü Easy to install
- ◆ One Ring Fits Multiple Stuffing Boxes
 - ü Fewer Orders
 - ü Lower Inventory
 - ü Fewer Outages
- ◆ Virgin PTFE
 - ü Temperature to 500° F
 - ü pH range from 0-14



Lantern Ring Material

Available sizes

Cross-Section	Width
1/4	3/8
5/16	7/16
3/8	1/2
7/16	9/16
1/2	5/8
9/16	11/16
5/8	3/4
3/4	7/8
7/8	1



All Sizes in 48" Lengths
Custom Sizes Available upon Request

Guards

Features

- ◆ Economically priced
- ◆ Safety yellow
- ◆ Barrel type coupling guards will bolt directly to many common models of pumps including: Goulds, Durco, Summit, Peerless and others.



Products of Distinction!

Product series



intMPE inc.

International Mineral Processing Equipment

Ü Thank you for your confidence
in Intmpe Products & Services!