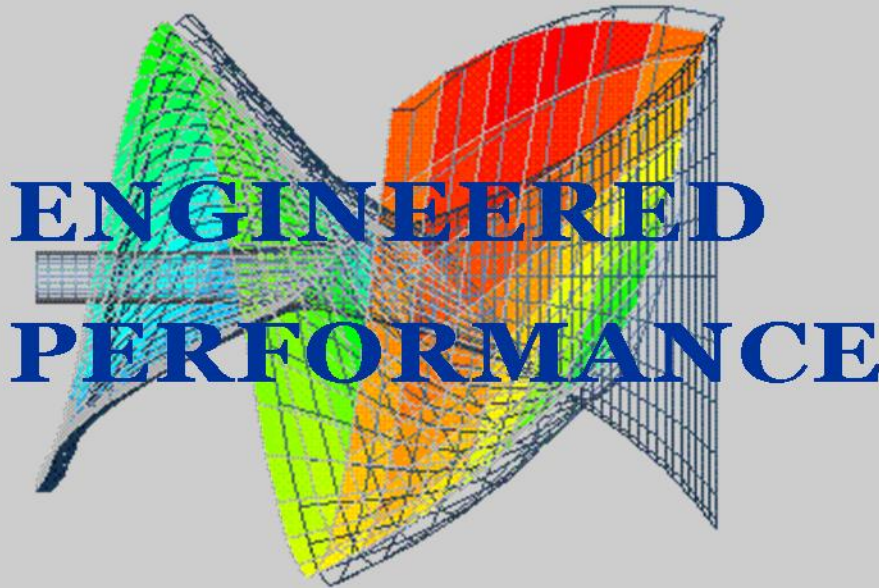


intMPE

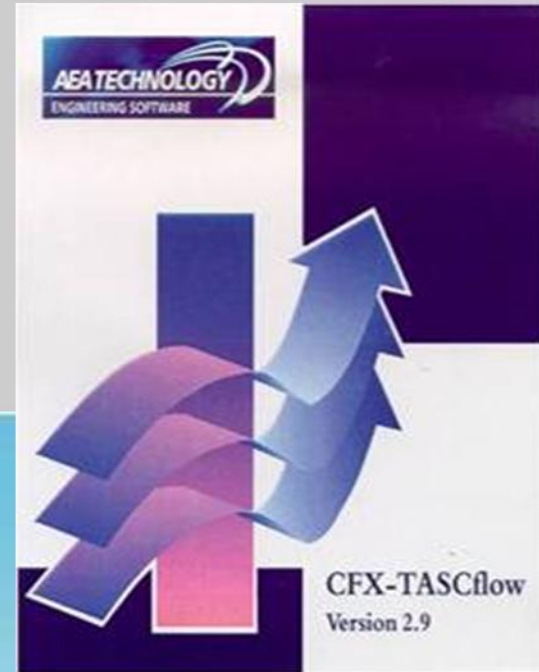


International Mineral Processing Equipment



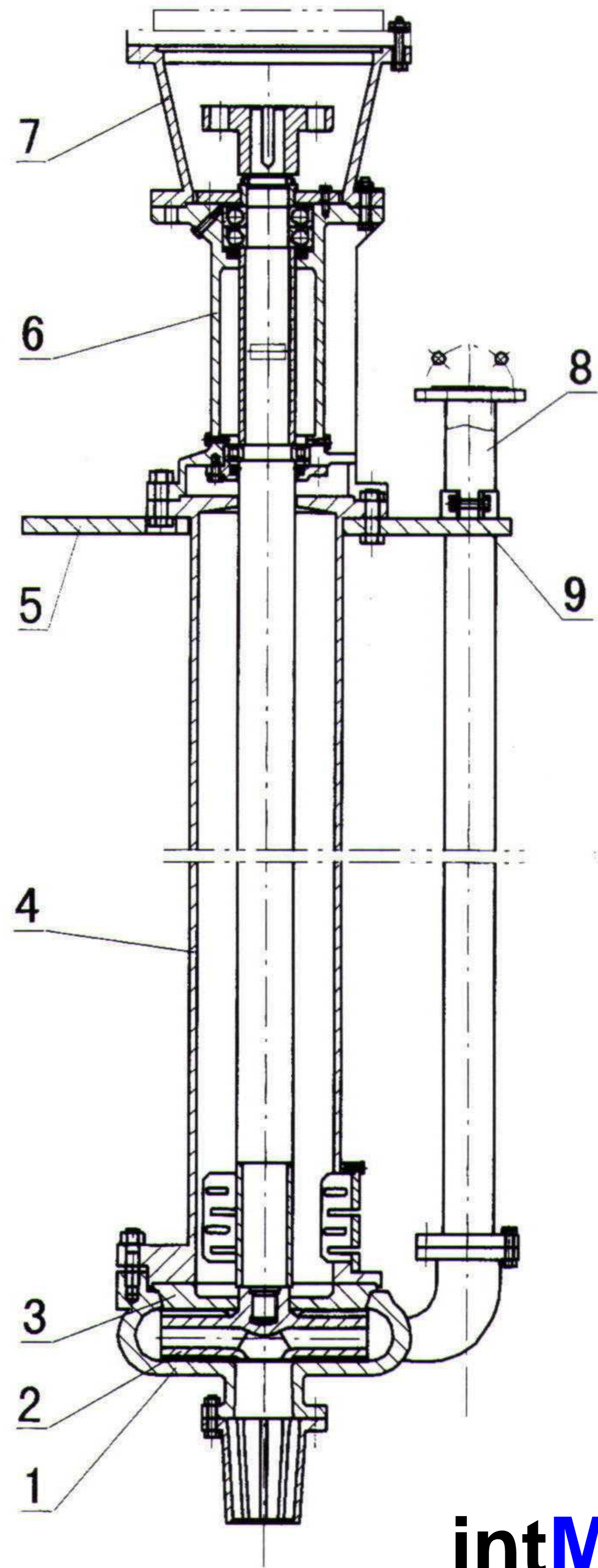
Industrial Series

API-610 & ANSI B73.1M



intMPE

International Mineral Processing Equipment
A Division of Canamera Enterprises Inc.



intMPE

STRUCTURAL LAYOUT

- | | | |
|---------------------|----------------------|-----------------------|
| 1. Volute Casing | 4. Column | 7. Motor Support |
| 2. Impeller | 5. Base Plate - Left | 8. Discharge Pipe |
| 3. Drive Side Plate | 6. Pedestal | 9. Base Plate - Right |

INTMPE PUMP DESCRIPTION

1. GENERAL

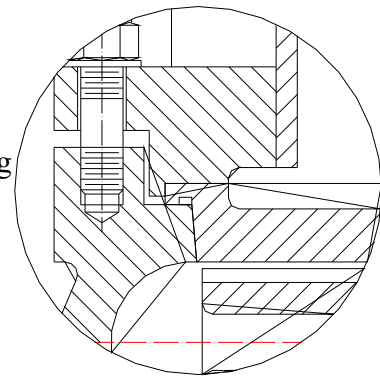
MPV series pumps are heavy-duty sump pumps, designed and built for abrasive applications. They are single-stage, single-suction, overhung, vertical, centrifugal pumps. MPV pumps feature a simple construction design, a single case without shaft seal. They are easy to install and easy to maintain. **ALL MPV PUMPS ARE ISO-9001 CERTIFIED.**

2. SINGLE CASE CONSTRUCTION

MPV pumps have a single casing. However, the pump casing, cover and impeller are made of 28% chrome (ASTM A532) cast iron to ensure wear resistance. They are replaceable when worn out. Enough parts are stocked to ensure prompt delivery when ordered.

3. CASE AND VOLUTE

The pump is of a single volute design. Hydraulically, it features a low constant radial load design. This feature is especially important since MPV pump usually have a long over hung. Mechanically, it features a tapered fitting between the case and the cover for easy assembly and disassembly.



4. IMPELLER

MPV pumps can have a closed impeller or an open impeller, depending on the application. The horsepower is transmitted through threads in the impeller. **No insert is placed for the thread.** The impeller has twisted vanes for high efficiency and good flow conditions to ensure even wear.

5. SHAFT & SHAFT SEAL

MPV pumps have a heavy shaft since they usually have a long over hung. As a standard, there is no shaft seal. Pumping fluid can go into the pump from the drainer above the impeller due to the pumping out vanes. MPV pumps are designed for severe operating conditions. They can even run dry due to their rugged design.

6. BEARING ASSEMBLY

SKF bearings are used in the MP pumps. Bearing design life B10 is minimum 25,000 hours. The bearings are grease lubricated. The bearing housing has a large grease chamber to ensure adequate lubrication and bearing cooling.

7. PUMP AND MOTOR CONNECTION

The pump and motor can be directly coupled or connected with belts. When they are connected with belts, the motor hangs on the bearing housing in a compact arrangement.

intMPE

The Clear Water Performance of MPV Slurry Pumps (1)

Type	Speed	Capacity	Head	Power of shaft	Eff.	Motors
	n	Q	H	Pa	η	
	r/min	m ³ /h	m	kW	%	
150MPV-35	980	198	17.9	15.3	63.1	380V 37kW
		332	13.2	17.5	68.1	
		364	12.1	18.0	66.8	
	730	147	10.0	6.3	63.1	380V 15kW
		247	7.3	7.2	68.1	
		271	6.7	7.4	66.8	
590	119	6.5	3.3	63.1	380V 11kW	
	200	4.8	3.8	68.1		
	219	4.4	3.9	66.8		
100MPV-A34	1480	157	36.8	26.1	60.2	380V 45kW
		214	32.6	29.2	65.1	
		293	24.4	33.5	58.2	
	970	103	15.8	7.4	60.2	380V 15kW
		140	14.0	8.2	65.1	
		192	10.5	9.4	58.2	
80MPV-A36	1480	105	45.5	25.0	52.1	380V 45kW
		144	41.4	27.9	58.2	
		201	32.5	32.8	54.2	
	970	69	19.5	7.0	52.1	380V 15kW
		94	17.8	7.8	58.2	
		132	14.0	9.3	54.2	
65MPV-A30	1470	38	34.7	8.2	43.7	380V 18.5kW
		58	31.9	9.7	51.9	
		98	26.0	13.4	51.7	
	960	25	14.8	2.3	43.7	380V 5.5kW
		38	13.6	2.7	51.9	
		64	11.1	3.7	51.7	
50MPV-A20	1440	17.1	10.7	1.4	34.9	380V 4kW
		24.7	9.2	1.6	38.6	
		38.0	6.0	2.0	31.2	
	910	10.8	4.3	0.4	34.9	380V 1.1kW
		15.6	3.7	0.4	38.6	
		24.0	2.4	0.5	31.2	

intMPE

The Clear Water Performance of MPV Slurry Pumps (2)

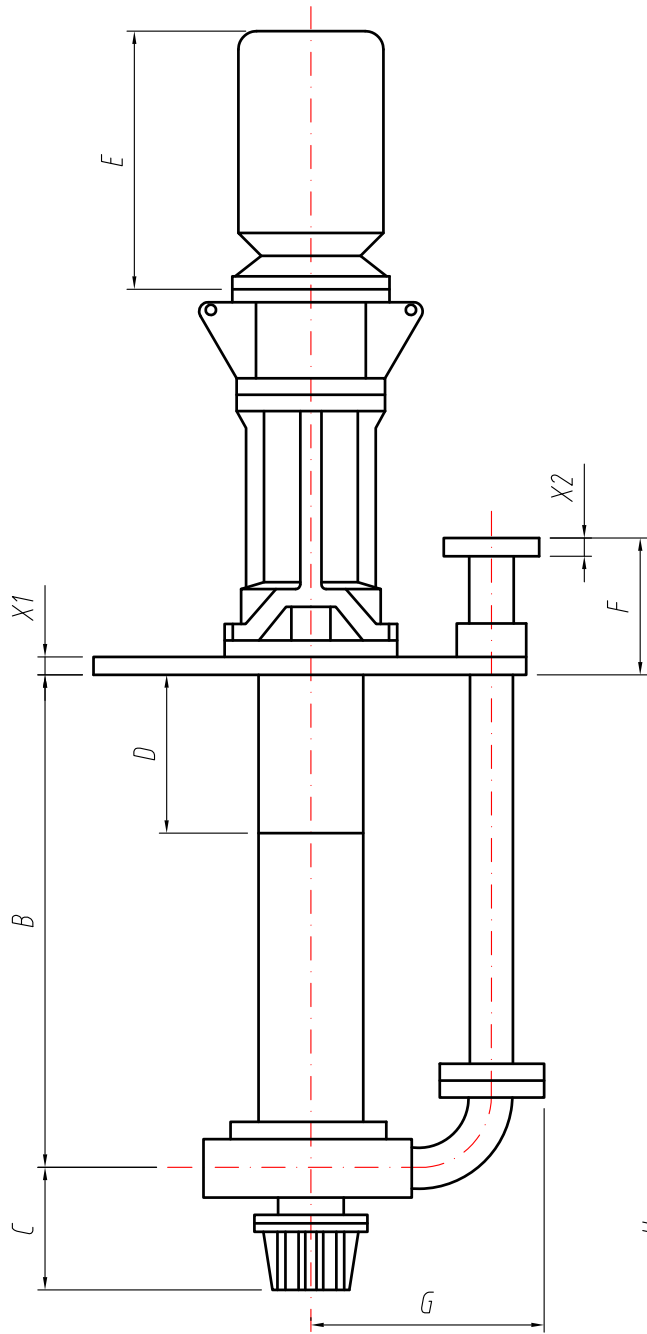
Type	Speed	Capacity	Head	Power of shaft	Eff.	Motors
	n r/min	Q m ³ /h	H m	Pa kW	η %	
40MPV-B25	1440	10.1	21.5	2.3	26.1	380V 5.5kW
		18.4	19.0	2.6	36.6	
22.9		16.8	2.8	37.6		
910	910	6.4	8.6	0.6	26.1	380V 1.1kW
		11.6	7.6	0.7	36.6	
		14.5	6.7	0.7	37.6	
40MPV-A21	1440	9.5	17.0	1.6	27.9	380V 4.0kW
		20.3	15.3	2.0	42.4	
		25.9	14.1	2.2	44.6	
910	910	6.0	6.8	0.4	27.9	380V 1.1kW
		12.8	6.1	0.5	42.4	
		16.4	5.6	0.6	44.6	

1. 150MPV-35 n=590r/min

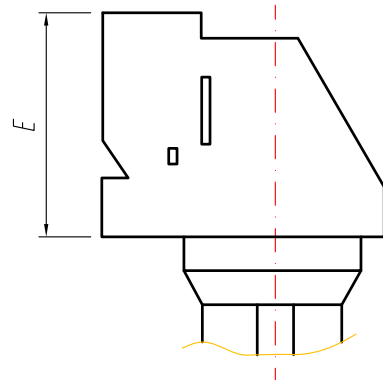
2. V1, B3, B5

Note: 1. 150MPV-35(n=590r/min) is belt driven while the others are all directly-coupled

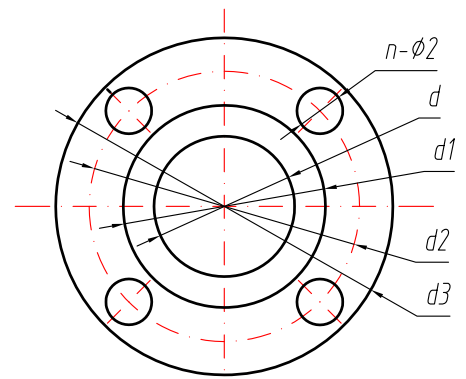
2. V1,B3,B5 are mounting patterns of motors.



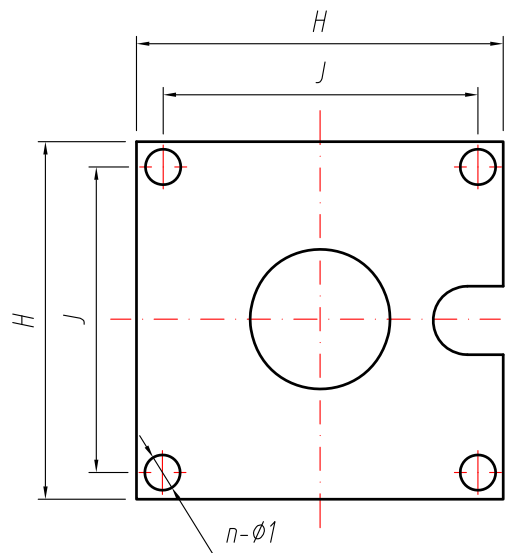
Direct Coupled Type



Belt Drive Type



Outlet Flange



Baseplate

intMPE inc.

International Mineral Processing Equipment

Model

MPVSP

Specification

Motor

Type	Mating Motors	Driving Patterns	A	B	C	D	E	F	G	H	J	n-φ1	X1	Outlet Flange						Weight Motor Included(kg)	
														d	d1	d2	d3	n-φ2	X2		
150MPVSPA35	Y250M-6 37kW V1	DC	3093	1049	360	350	895	221	610	1150	1080	4-φ25	25	φ150	φ200	φ225	φ260	8-φ18	22	1300	
	Y200L-6 15kW V1	DC	2908				740													702	1190
	Y160L-6 11kW B3	ZV	2674				702													1046	
100MPVSPA34	Y225M-4 45kW V1	DC	2930	1031	310	350	795	214	573	1180	1110	4-φ25	25	φ100	φ145	φ170	φ205	4-φ18	18	1183	
	Y180L-6 15kW V1	DC	2765				660													660	1036
80MPVSPA36	Y225M-4 45kW V1	DC	2887	1028	270		350	795	212	543	1120									1050	4-φ22
	Y180L-6 15kW V1	DC	2722			660		660				864									
65MPVSPA30	Y180M-4 18.5kW V1	DC	2673	1028	270	350		620	212	416	712	672	4-φ22	25	φ65	φ115	φ130	φ160	4-φ18	18	
	Y132M2-6 5.5kW B5	DC	2458				435	435													614
50MPVSPA20	Y112M-4 4kW B5	DC	1941	814	195		350	340	141	321											4-φ25
	Y90L-6 1.1kW B5	DC	1881			290		290					275								
40MPVSPB25	Y132S-4 5.5kW B5	DC	1961	826	210	350		395	130	334	600	540	4-φ25	16	φ40	φ72	φ100	φ130	4-φ14	16	
	Y90L-6 1.1kW B5	DC	1899				290	290													345
40MPVSPA21	Y112M-4 4kW B5	DC	1961	829	209		350	340	125	309											4-φ25
	Y90L-6 1.1kW B5	DC	1901			290		290					345								

intMPE inc.
International Mineral Processing Equipment

Model

MPVSP

Specification

Motor